



World's Finest Products For Harley-Davidsons

NEW PRODUCTS - NOVEMBER 24





MX-Evolution Footpegs

From legacy to evolution, meet the Burly Brand MX-Evolution Pegs. Crafted with precision CNC machining, the square design of our MX-Evo Pegs pay homage to the iconic motocross aesthetic of the 1970's with a twist of modern ingenuity. The Burly Brand logo is laser engraved with meticulous detail, which stands as a mark of uncompromising quality. Each peg reflects reliability, whether you're pushing stunts or enjoying a ride through the scenic backroads. Achieve the perfect alignment for every ride with the adjustable clevis system and enjoy unwavering stability as set screws provide a secure grip, making every movement on your journey confident and controlled.

- Square-shaped for a modern twist
- Etched with Burly Brand logo
- Crafted from lightweight, high-quality aluminum alloy
- CNC machined
- Adjustable clevis for personalized positioning
- Set screws provide secure traction for various riding styles

Color: Black, Anodized , Unit: Pair , Qty.: 1

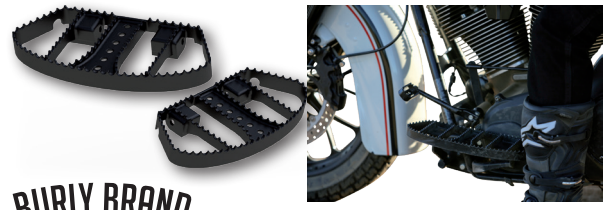
PART#	FITMENT
929384	HD with standard male mount pegs, except 18-up Softail models
929385	18-24 FX Softail



Next Level NXL Mini Floorboards

- One part of the new high-quality Kodlin NXL Line
- Sturdy yet lightweight, black anodized billet aluminium construction frame
- Brushed stainless steel cover for a sleek and technical look
- Dimensions: 150 x 90 x 15 mm
- Note: Kuryakyn Splined Peg Adapter is needed. Sold separately.

Part#: 926654 , Fitment: 91-20 Sportster, 85-94 FX Model, 91-17 Dyna, 84-24 Softail, 02-17 V-Rod , Fitment Note: Only for FX Softail models (front position), adapter not included , Color: Black, Anodized , Description: Brushed Stainless Steel Cover , Unit: Pair , Qty.: 1



MX-Style Floorboards

Based off the aesthetic of our original MX-Style pegs, we now offer MX-Style Floorboards for HD Touring models! They are made of steel with just the right amount of serration to keep your feet planted. TIG welded for strength and powder coated Satin Black to blend nicely with your bike.

Color: Satin Black Powder Coated , Unit: Pair , Qty.: 1

PART#	FITMENT
895087	85-24 Touring, 09-24 Trike, 86-17 FL Softail
925222	18-24 FL Softail



Next Level NXL Mini Floorboards

- One part of the new high-quality Kodlin NXL Line
- Sturdy yet lightweight, black anodized billet aluminium construction frame
- Brushed stainless steel cover for a sleek and technical look
- Dimensions: 150 x 90 x 15 mm
- Note: Kuryakyn Splined Peg Adapter is needed. Sold separately.

Part#: 926654 , Fitment: 91-20 Sportster, 85-94 FX Model, 91-17 Dyna, 84-24 Softail, 02-17 V-Rod , Fitment Note: Only for FX Softail models (front position), adapter not included , Color: Black, Anodized , Description: Brushed Stainless Steel Cover , Unit: Pair , Qty.: 1



Next Level NXL Footpegs

- One part of the new high-quality Kodlin NXL Line
- Sturdy yet lightweight, black anodized billet aluminium construction frame
- Brushed stainless steel cover for a sleek and technical look
- Dimensions: 90 x 70 x 15 mm

Part#: 926655, Fitment: 21-24 Sportster RH, 21-24 Pan America, 18-20 FXLR, 18-20 FXBB, 20-24 FXST, 20-24 FXLRS, 21-24 FXBBS, 22-24 FXLRST, 22 FXRST, Color: Black, Anodized, Description: Brushed Stainless Steel Cover, Unit: Pair, Qty.: 1



1.4" Bagger Flow Bar Super Fat Handlebar for Street Glide

- Three heights medium, tall and extra tall
- Made of premium steel
- Handcrafted with highest European standards in Germany by Kodlin
- 1" knurled clamping area
- 3 mm tubing means less vibrations

Fitment: 23-24 FLHXSE, 24 FLHX, Color: Gloss Black Powder Coated, Description: with 1" Clamp Diameter, Operation Type: Throttle By Wire, Bar ø: 1.4", Clamp ø: 1", Cable Routing: 3-Hole, Width: 955 mm, Pullback: 150 mm, Unit: Each, Qty.: 1

Part#	Description	Height mm	Width mm
929977	Medium (280mm)	280	750
929978	Tall (380mm)	380	770
929979	Extra Tall (430mm)	430	780



2" Str8UP Handlebar for Road Glide

- 2" diameter
- 1" bar end diameter
- 1 1/4" clamp diameter
- Suitable for heated grips
- Designed and made in Germany by Kodlin Motorcycles

Fitment: 23-24 FLTRXSE, 24 FLTRX, 24 FLTRXSTSE, Fitment Note: Fits with OEM clutch-and brake master cylinder clamps, Color: Black Powder Coated, Certification: With Approval, Operation Type: Cable Clutch, Throttle By Wire, Bar ø: 2", Clamp ø: 1 1/4", Cable Routing: 3-Hole, Pullback: 130 mm, Unit: Each, Qty.: 1

PART#	DESCRIPTION	HEIGHT MM	WIDTH MM
929977	Medium (280mm)	280	750
929978	Tall (380mm)	380	770
929979	Extra Tall (430mm)	430	780



NEW PRODUCTS



CAYO

disc.dokk Charging Pod

The CAYO disc.dokk is a high-quality, MagSafe-compatible charging pod with up to 15W power and is a perfect match for the CAYO phone.dokk cases. The solid metal housing in black ensures optimum passive cooling and its compact design makes it ideal for traveling or any desk. An integrated flip ring allows the phone to be positioned vertically or horizontally - ideal for video calls or watching movies. The soft-touch surface protects the smartphone or case from scratches and at the same time ensures a pleasant, high-quality feel.

Part#: 930893 , Color: Black , Unit: Each , Qty.: 1



930813, 930830 930814, 930828

CAYO

phone.dokk Phone Case

The elegant and flat case protects your valuable smartphone from scratches and drops. MagSafe compatible with extra strong magnets for attaching to magnetic holders and charging pods. Integrated recess for secure and quick locking with the CAYO mounting systems.

Unit: Each , Qty.: 1

PART#	COLOR	DESCRIPTION
930810	Opaque Black	For iPhone 14 Pro
930811	Clear White	For iPhone 14 Pro
930812	Smoky Black	For iPhone 14 Pro
930813	Opaque Black	For iPhone 15 Pro
930814	Clear White	For iPhone 15 Pro
930815	Smoky Black	For iPhone 15 Pro
930816	Clear White	For iPhone 15
930817	Smoky Black	For iPhone 15
930818	Opaque Black	For iPhone 15
930819	Clear White	For iPhone 15 Pro Max
930820	Opaque Black	For iPhone 15 Pro Max
930821	Smoky Black	For iPhone 15 Pro Max
930822	Clear White	For iPhone 14/13
930823	Smoky Black	For iPhone 14/13



930895

930895

CAYO

car.dokk Phone Bracket System with Inductive Charging

High-quality mounting system with inductive charging function for smartphones in the vehicle. The patented clamp ensures stable attachment to the ventilation slats and ensures that the phone remains securely in position while driving. The device is attached magnetically and can be used in both portrait and landscape format. The inductive charging function with up to 15W enables fast, wireless charging. Compatible with CAYO cases, as well as all MagSafe-compatible phones and accessory cases. The elegant metal housing is coated in black for optimum dissipation of the heat generated during charging. With its flat, unobtrusive design, the car.dokk blends harmoniously into the vehicle interior and adds an elegant touch to any cockpit.

Note: Not suitable for round ventilation outlets.

Part#: 930895 , Color: Black , Unit: Each , Qty.: 1



930815 930816 930818 930829 930832 930833

PART#	COLOR	DESCRIPTION
930824	Opaque Black	For iPhone 14/13
930825	Clear White	For iPhone 14 Pro Max
930826	Opaque Black	For iPhone 14 Pro Max
930827	Smoky Black	For iPhone 14 Pro Max
930828	Clear White	For Samsung A54
930829	Smoky Black	For Samsung A54
930830	Opaque Black	For Samsung A54
930831	Clear White	For Samsung S23
930832	Smoky Black	For Samsung S23
930833	Opaque Black	For Samsung S23
930834	Clear White	For Samsung S23 Ultra
930835	Smoky Black	For Samsung S23 Ultra
930836	Opaque Black	For Samsung S23 Ultra



930805



CAYO

moto.dokk Phone Bracket System with Inductive Charging

The fully equipped mounting system. Attaches your smartphone quickly and securely to any motorcycle. Choose a suitable case or universal pad. Direct connection to the vehicle battery is possible with the Cayo battery.dokk.

- Integrated vibration decoupling
- Integrated inductive charging
- Smartphone docking in portrait and landscape format
- Suitable for all handlebar diameters

Part#: 930805 , Color: Black , Unit: Kit , Qty.: 1

CAYO



uni.dokk Universal Adhesive Pad

Your phone case is not included yet in the Cayo case line? No problem, simply stick the Cayo universal adhesive pad to the back of your smartphone or case. The high-quality adhesive pad guarantees secure adhesion to almost all surfaces.

Part#: 930808 , Color: Black , Unit: Each , Qty.: 1

CAYO



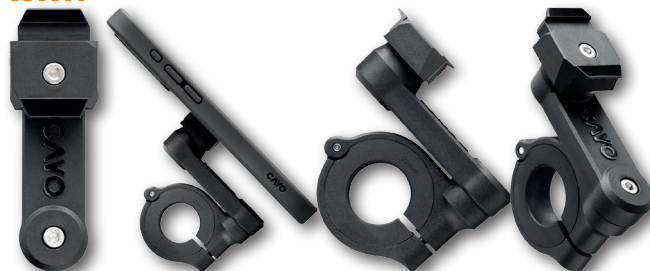
wall.dokk Plug-In Power Supply

The high-quality, small and powerful plug-in power supply transforms any 220V socket into a lightning-fast charging station. Thanks to its compact design, this power adapter fits in any bag and is the ideal companion for on the go. Whether you want to charge your smartphone, tablet or another USB-C-capable device - with 20W of power, your device will be supplied with new energy in no time at all.

Part#: 930894 , Color: Black , Unit: Each , Qty.: 1



930806



CAYO

bike.dokk Phone Bracket System

The quick and secure mounting system for your smartphone. Suitable for bicycle or motorcycle. Select matching case or universal pad separately.

- Very small and compact
- Quick and secure attachment
- Portrait and landscape format without conversion
- Suitable for all handlebar diameters

Part#: 930806 , Color: Black , Unit: Each , Qty.: 1



CAYO

battery.dokk Power Adapter

The smart power adapter for connecting the CAYO moto.dokk directly to the vehicle battery via USB-C plug.

- Quick and easy to connect directly to the battery terminals
- Switches off when not in use, no battery discharge
- No time-consuming search for ignition plus

Part#: 930807 , Unit: Each , Qty.: 1



Mid-Mount License Plate Base Plate Kit

- Clean and cool look
- Replaces original license plate light and license base plate
- Milled on state-of-the-art 5-axis CNC machining center
- Includes license plate base plate with License plate light and mounting hardware

Part#: 929386 , **Fitment:** 23-24 FLHXSE, 23-24 FLTRXSE, 24 FLTRK, 24 FLHX, 24 FLTRX, 24 FLTRXSTSE , **Color:** Black **Cut** , **Description:** Germany 180 x 200 mm , **Certification:** E-Approved , **Lighting Type:** LED , **Unit:** Each , **Qty.:** 1



928096

928097

BLUE STREAK

Silicone Spark Plug Wire

- Copper Core plug wire set
- With improved electrical conductivity and mechanical strength
- These non resistive sets should only be used with points ignitions

Color: Black , **Description:** Set of 4 Cables , **Unit:** Set , **Qty.:** 1

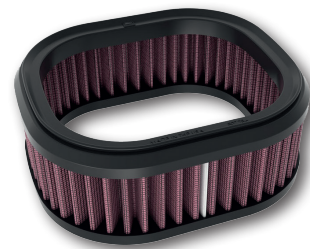
PART#	FITMENT	OEM #
928096	17-24 Touring, (except 23-24 FLHXSE, 23-24 FLTRXSE, 24 FLHX, 24 FLTRX, 24 FLTRXSTSE), 17-24 Trike	31600018, 31600023, 31600078, 31600079
928097	18-24 Softail, (except 19-20 FXDRS 114)	32001-08, 31600081



Big Sucker Upgrade Air Filter for M8 Factory Oval Filters (with OE Cover)

- Performance air filter upgrade for factory HD Ventilator® oval air cleaners and M8 „special“ models equipped with factory oval air cleaners
- Made from high-flow black pre-oiled cotton media wrapped in a stainless-steel jacket
- Designed for optimum airflow with a unique look
- Increased filter height specially designed to increase airflow
- Fits into the factory backing plate and accepting the factory outer cover
- Over 22% more air filter surface area than filters found in factory oval air cleaners
- Filter's high-flow performance filter media drastically improves airflow
- Includes internal spacers and hardware
- Quick and easy installation
- Note: Supplied without design face plate for use with the OE cover.

Part#: 928122 , **Fitment:** 17-21 FLHTKSE, 17-20 FLHXSE, 18 FLTRXSE, 18 ANVFLHTKSE, 18, 21, 23 FLTRXS, 21 FLH, 21, 23 FLHXS, 21-24 FLHRXS, 22 FLHXST, 22 FLTRXST, 22 FLTRK, 18-19 FXBRS 114, 18 FXBRS 114 ANX, 18-20 FLFBS 114, 18 FLFBS 114 ANX, 18 FLFBS 114 ANV, 18 FLHCS 114, 18 FXFB, 19-20 FLHC 114, 19 FXFB 114, 20-21 FXLRS, 20 FXFBS 114, 21-24 FXBBS, 21-22 FXBRS, 21-24 FLFBS, 21-24 FXFBS, 22-24 FLHCS, 23 FLHCSANV , **Fitment Note:** HD models, equipped with stock or SE oval air cleaners , **Description:** Increased Height , **OEM #:** 29400267 , **Unit:** Each , **Qty.:** 1



High-Flow Replacement Air Filter

K&N's high-flow air filters are available as a replacement for your stock motorcycle air filter element. They are custom engineered to fit your specific application and are designed to provide low restriction and increased performance, while providing excellent engine protection for your motorcycle.

- Designed to increase horsepower and acceleration
- Hundreds of sizes and shapes for most applications
- High air flow with excellent filtration
- Clamp-on washable and reusable air filter
- Malleable flanges

Unit: Each , **Qty.:** 1

PART#	FITMENT
929765	22-24 Chief Dark Horse, 22-24 Chief Bobber Dark Horse, 22-24 Super Chief Limited, 23-24 Sport Chief
930495	19-20 Indian FTR



Revolver End Cap



Rebel End Cap

922026



Single Slip-On Muffler Set

- Designed for performance these E-approved single slip-ons have a nice deep sound
- The E-approval makes them street legal all over the European community
- Easy to install on the stock header pipes and feature built-in catalytic converters depending on model
- Removal of the dB Killers voids the E-approval
- Black versions Ceramic Coating, 900° heat resistant
- With Service Card registration, 30 months V-Performance warranty

Certification: Euro 5 , Unit: Set , Qty.: 1

PART#	FITMENT	COLOR	DESCRIPTION
922026	21-24 FLSB	Black Ceramic Coated	Black Cut Revolver End Cap
922027	21-24 FLSB	Chrome	Chrome Revolver End Cap
921936	22-24 Nightster RH975, 23-24 Nightster Special RH975S	Black Ceramic Coated	Black Cut Revolver End Cap
930986	25 Scout Classic, 25 Scout Bobber, 25 Sport Scout, 25 Super Scout, 25 101 Scout	Chrome	Chrome Rebel End Cap, Euro 5+
930987	25 Scout Classic, 25 Scout Bobber, 25 Sport Scout, 25 Super Scout, 25 101 Scout	Black Ceramic Coated	Black Cut Rebel End Cap, Euro 5+

NEW PRODUCTS



928087



928088

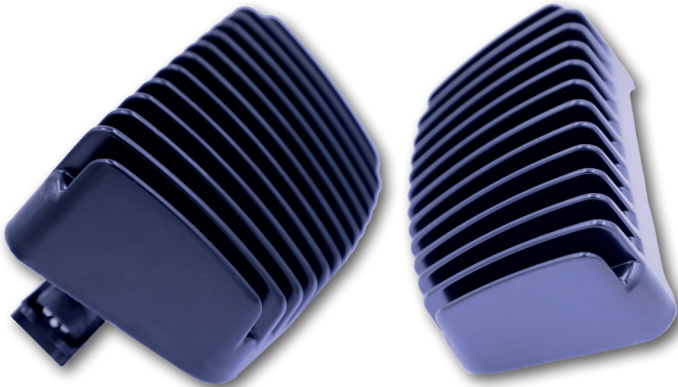


Condenser

- Made only from the finest materials
- Designed for high quality and reliability

Unit: Each , Qty.: 1

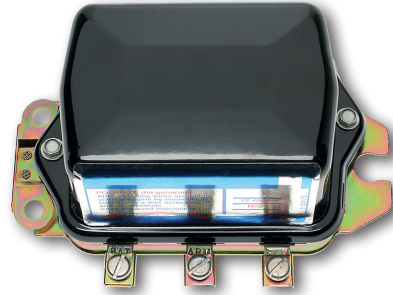
PART#	FITMENT	FITMENT NOTE	OEM #
928087	58-69 Sportster		29534-55A
928088	30-52 Flathead, 36-47 Knucklehead, 48-65 Panhead, 66-78 FL Shovel, 71-78 FX Shovel, 54-78 Sportster	Except K models with magneto ignition	30801-47, 32726-30



OEM Replacement Voltage Regulator

- Solid State Rectifier/Regulators
- Plug Style
- Replaces OEM unit

Part#: 928085 , Fitment: 17-23 Touring, 24 FLHRXS, 24 FLTRK, 24 FLHTK, (except 23 FLHXSE, 23 FLTRXSE), 17-24 Trike , Color: Black , OEM #: 74700025 , Unit: Each , Qty.: 1



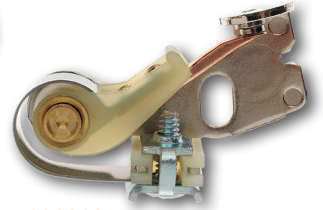
Delco Type Voltage Regulator

- OEM equivalent electro-mechanical, voltage regulator
- For 12V Generator
- Heavy duty, shock mounted steel base
- Vibration resistant internal wire connections
- Large diameter contact surfaces
- Black enamel

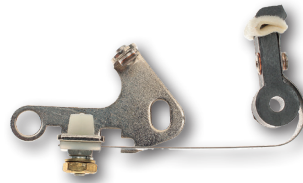
Part#: 928099 , Fitment: 65 Panhead, 66-69 FL Shovel, 65-77 XLH , Color: Black , OEM #: 74510-64 , Unit: Each , Qty.: 1



928092



928093



928094

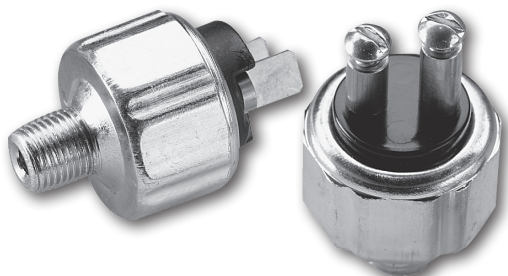


Circuit Breaker

- Made only from the finest materials
- Designed for high quality and reliability

Unit: Set , Qty.: 1

PART#	FITMENT	FITMENT NOTE	OEM #
928092	49-52 Flathead, 49-65 Panhead, 66-69 FL Shovel, 54-69 Sportster	Except K models, equipped with magneto ignition	30605-48
928093	71-78 Sportster, 70-78 FL Shovel, 71-78 FX Shovel		32661-70
928094	58-69 Sportster	For models with magneto ignition	29533-55A



17716

17715



895446

928095

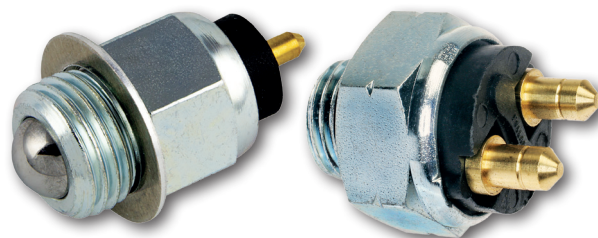


Stoplight Switch

- Top quality hydraulic switch
- Heavy duty contacts
- Top quality brass terminals
- Reliable performance in the most severe environments

Unit: Each , Qty.: 1

PART#	FITMENT	OEM #
17716	79-20 Sportster, 68-84 FL Shovel, 71-84 FX Shovel, 85-94 FX Model, 84-23 Softail, 85-23 Touring, 02-17 V-Rod, 91-07 Dyna, 21-23 Sportster RH, (except 22-23 Nightster RH975, 23 Nightster Special RH975S), 21-23 Pan America	72023-51A
17715	58-65 Panhead, 66-68 FL Shovel, 51-73 Servi Car	72002-51A
895446	79-20 Sportster, 68-84 FL Shovel, 71-84 FX Shovel, 85-94 FX Model, 84-23 Softail, 85-23 Touring, 02-17 V-Rod, 91-07 Dyna, 21-23 Sportster RH, (except 22-23 Nightster RH975, 23 Nightster Special RH975S), 21-23 Pan America	72023-51D
928095	08-17 Dyna	72026-08A

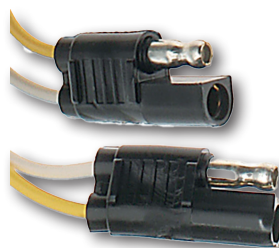


Transmission Neutral Switch

- Manufactured to very stringent specifications
- Proper function and long life in the toughest conditions
- Featuring hardened, high carbon steel stems
- Maximum wear resistance and durability

Unit: Each , Qty.: 1

PART#	FITMENT	OEM #
928090	99-20 Sportster, 99-02 M2, 99 S3, 99-02 X1, 03-10 XB	33900-99
928091	07-17 Dyna, 07-24 Softail, 07-24 Touring, (except 23-24 FLHXSE, 23-24 FLTRXSE, 24 FLTRXSTSE), 09-24 Trike	33926-06B

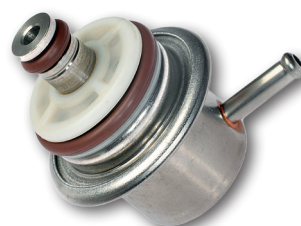


Flat Type 2 Pole Neoprene Molded Connector

This flat type 2 pole neoprene molded connector with 12", 18 gauge wire is ideal for connecting electrical systems.

- Pre-wired
- Ready to install
- Molded case
- All-round weather protection

Part#: 928098 , Field of Application: Universal , Unit: Set , Qty.: 1



Fuel Pressure Regulator for Touring (Magnet Marelli EFI)

- Made from finest materials
- Designed for high quality and reliability

Part#: 928089 , Fitment: 95-01 Touring , Fitment Note: Only for EFI models , OEM #: 27219-95 , Unit: Each , Qty.: 1



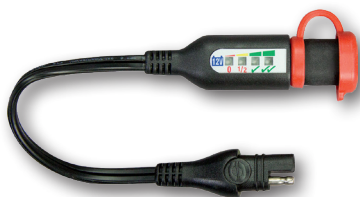
OptiMATE

Pro-4 Duo 12V 5A Automatic Diagnostic Battery Charger x 4

OptiMate Pro-4 Duo is the automatic diagnostic charger for 4 x 12V Pb lead-acid (STD, AGM, GEL) and/or 12.8V LFP lithium (LiFePO4 / Lithium Ferrous Phosphate) batteries. The 4 bank battery charger can independently charge, test and maintain 4 x 12V lead-acid and 12.8V / 13.2V lithium LFP batteries. Four fully independent 5 Amp charging stations / banks, each with 3 selectable modes to service new and used batteries – activate 4 x new, or save and/or charge and test 4x used batteries. Automatically save any type of deep discharged battery from as low as 0.5 Volts, additionally for LFP lithium, manually reset the protective BMS and save from zero volts – dead-flat, neglected batteries can be recovered. State of health test for good (80 to 100%), ok (60 – 80%) or bad (below 60%) batteries – confirms if battery is serviceable or should be replaced. Designed for the global professional, including battery service, new powersport vehicle and/or new battery sales – service orientated product designed for continuous use. Each bank delivered with a replaceable output cord and fused battery clip set, AC power cord is replaceable / exchangeable.

- For 12V lead-acid (STD/AGM/GEL), 12.8V/13.2V LiFePO4, Pb/LFP batteries
- 0.2A to 5A variable charging amps (Ampmatic)
- 0.5V to 14.4V charging volts @ 12V lead-acid mode
- 11.4V to 14.4V charging volts @ 12.8V/13.2V Lithium LFP mode
- 0.5V to 14.4V charging volts @ 60' mode
- Class II AC cord suitable for region, 180cm charge lead extender, fused battery clips included
- Global (100-240V 50-60Hz)
- AC Class 2 input socket, with ON/OFF switch, 15cm output cord
- IP40 indoor rating
- 3 selectable operation modes:
- Pb: for 12V lead-acid (STD / AGM / GEL) batteries
- LFP: for 12.8V / 13.2V LiFePO4 batteries
- 60': A shortened program with charge time limited to 60 minutes, suitable for first charge / activation of a new battery, or a quick recharge of a healthy used battery with voltage higher than 11.4V.
- Note: If no selection (Pb or LFP) is made prior to connecting a battery for charge, the 60' mode becomes the default selection.

Part#: 928140, Field of Application: **12V batteries including lead-acid (Pb) - STD (with filler caps), AGM & GEL (sealed VRLA) and Li-Ion made with LiFePO4 / LFP technology**, Unit: Each, Qty.: 1



OptiMATE

O-125 Charge Level Monitor SAE Adapter Cable

SAE to SAE adapter with state of charge monitor that connects directly to the SAE battery lead fitted to the 12V battery in your parked powersport vehicle.

- Ideal for 12V lead-acid & 12.8V lithium LFP (LiFePO4) batteries
- SAE quick connect charge port for charging battery when needed
- SAE connection system fits any SAE standard 2-pin connector
- Includes in-line seal that mates with OptiMate SAE
- With weatherproof sealing cap protects against dirt and water
- Battery status indication every 3 seconds (LED blinks)
- For high performance AGM and lithium-ion LFP

Part#: 926601, Field of Application: **Fits any battery SAE standard 2-pin connector**, Unit: Each, Qty.: 1



OptiMATE

Solar Duo 10W Battery Charger

6-step 12V / 12.8V 0.83A sealed solar charger and maintainer. OptiMate Solar DUO 10W is a smart sun powered charger and maintainer for all 12V batteries. The optimate 1 duo adapts automatically to the connected battery type (Lithium or standard). The controller's fully automatic multi-step program brings the battery safely to full charge – Connect to the battery and OptiMate Solar DUO 10W does the rest, no supervision required. The fully automatic multi-step program of the controller brings the battery to full charge. OptiMate Solar DUO's smart control guarantees longer battery life and more battery power!

For all 12V power sport battery types including lead-acid (Pb) - STD (with filler caps), AGM and GEL (sealed VRLA), Li-Ion made with LiFePO4 / LFP technology.

- Converts low solar energy to efficient pulse charge
- DAY: Charge and maintain / NIGHT: monitor charge level
- Safe to leave connected - full electronic protection
- Saves your dead battery from as low as 4V
- Displays battery state of charge
- Energy saving technology
- IP 54 - works in any weather
- Solar panel specs:
- 10 Watts max.
- 12V / 12.8V
- Dimensions: 249 x 376 x 26 mm
- Outdoor Use
- Solar panel output cable 2000 mm long with SAE connector

Part#: 926599, Field of Application: **12V batteries: lead-acid (Pb) - STD (with filler caps), AGM and GEL (sealed VRLA), Li-Ion made with LiFePO4 / LFP technology**, Unit: Each, Qty.: 1



OptiMate

Pro-1 Duo Battery Charger, Tester, Power Supply

OptiMate PRO-1 DUO is the professional combination battery charger-tester and power supply for powersport, small craft, machine professionals, repair shops and battery retailers. 3 Selections: Select a charge mode for 12V lead-acid OR 12.8V LiFePO4, or select PowerSupply mode for battery support during vehicle diagnostics, tuning or troubleshooting. For all power sport 12V batteries including lead-acid (Pb) - STD (with filler caps), AGM & GEL (sealed VRLA) and Li-Ion made with LiFePO4 / LFP technology.

- Automatic fast battery activation (green test light indicates battery is healthy and sufficiently charged)
- Smart recovery mode for deep discharged batteries
- Pushbutton activated BMS reset for LiFePO4 batteries
- Test light indication for good (80 to 100%), ok (60 to 80%) and bad (below 60%) batteries
- Powersupply mode provides constant power for vehicle tuning, diagnostics and troubleshooting
- Global input - 100 to 240V 50-60Hz
- AC power socket for Class 2 power cords
- Portable use – vehicle hanging hook and wall receiver included
- PRO use: 12V lead-acid STD, AGM from 3-50Ah and 12.8V/13.2V Lithium LFP (LiFePO4) from 2-20Ah
- Normal use: 12V lead-acid STD, AGM from 3-240Ah and 12.8V/13.2V Lithium LFP (LiFePO4) from 2-120Ah.
- 0.4A to 10A variable charging amps(Ampmatic)
- 0.5V to 22V charging volts @ 12V lead-acid batteries
- 0.5V to 14.4V charging volts @ 12.8V/13.2V lithium batteries
- 11V to 13.6V powersupply
- IP40 indoor rating

Part#: 926600 , Field of Application: 12V batteries including lead-acid (Pb) - STD (with filler caps), AGM & GEL (sealed VRLA) and Li-Ion made with LiFePO4 / LFP technology , Unit: Each , Qty.: 1



Sintered Compound G1370-71 Brake Pads

Galfer has developed specific compounds for each use and motorcycle model looking to offer the top performances in all type of driving and for all the profiles and needs of users.

- Improved braking effect compared to semi-metal brake pads
- Requires for best performance a higher base temperature
- Superior hot braking behavior
- Suitable for use with steel and stainless steel discs
- Powerful, progressive & modular brake
- Low wear rate and minimum noise
- Maximum resistance to the fade effect
- Efficiency in wet conditions

Part#: 929290 , Fitment: 18-24 Softail , Certification: With Approval , OEM #: 41300197 , Unit: Pair , Qty.: 1



OptiMate

Premium SAE Extension Cable for Battery Charger

- Premium extender for battery chargers rated up to 5 Amps
- Rated for 5 Amp continuous use (7 Amp max.)
- Corrosion protected – Nickel coated contacts
- Rubber in-line seal protects SAE connection against dirt and water
- Rated for low temperatures and outdoor use
- Thicker insulation (1,2 mm) for better protection

Unit: Each , Qty.: 1

PART#	DESCRIPTION
926602	Length: 180 cm
926603	Length: 460 cm



926591



926592



These reduction rings are required if a brake disk with an inner diameter of 56 mm is to be mounted on a wheel hub with a brake disk mounting flange with a diameter of 50 mm.

Unit: Each , Qty.: 1

PART#	DESCRIPTION
926591	For 13 mm Hub Flange height
926592	For 5 mm Hub Flange height



VRM 302 Monster Tire

- Outstanding load rating and casing stiffness for exceptional two up handling
- Characteristic tread design permits remarkable all weather performance
- Sizes available for most custom cruisers and baggers

Part#: 925249 , Description: 180/50-21 63V TL Black Wall , Wheel /Tire ø: 21" , Unit: Each , Qty.: 1



+2" Monotube Cartridge Kit with Frequency Sensing Technology

Progressive Suspension brought modern technology to Harley-Davidson forks in the form of complete Monotube Fork Kits. Previously available in stock and lowered ride heights, Progressive Suspension is proud to introduce this same technology that made Progressive Suspension famous in a 2" above stock ride height for H-D Touring models. Enjoy the same great increase in brake dive resistance, stability, and improved cornering that comes standard with a Progressive Suspension FST Monotube Fork Kit without having to replace the stock fork tubes to achieve a taller stance. Replaces all OEM fork internals.

- 2" Over Stock Ride Height Without Changing Fork Tubes
- Frequency Sensing Technology (FST) Damper
- Improved Resistance to Brake Dive
- Improved Front End Stability & Cornering
- Improved Bottoming Control

Fitment Note: 49 mm fork tubes , Unit: Kit , Qty.: 1

PART#	FITMENT
928177	
928178	17-24 Touring, (except 23-24 FLHXSE, 23-24 FLTRXSE, 24 FLTRXSTSE)



+2" Monotube Cartridge Kit

Progressive Suspension brought modern technology to Harley-Davidson forks in the form of complete Monotube Fork Kits. Previously available in stock and lowered ride heights, Progressive Suspension is proud to introduce this same technology that made Progressive Suspension famous in a 2" above stock ride height for H-D Touring models. Enjoy the same great increase in brake dive resistance, stability, and improved cornering without having to replace the stock fork tubes to achieve a taller stance. Replaces all OEM fork internals.

- 2" Over Stock Ride Height Without Changing Fork Tubes
- Improved Resistance to Brake Dive
- Improved Front End Stability & Cornering
- Improved Bottoming Control

Part#: 928179 , Fitment: 97-13 Touring , Fitment Note: For 41mm forks , Unit: Kit , Qty.: 1



Linear Rate Lowering Fork Spring Kit

These kits, when combined with shorter than stock rear shocks, will give you that low, custom look. Comes complete with Fork Springs, spacers, and instructions. For a 1" or 2" low configuration for most models.

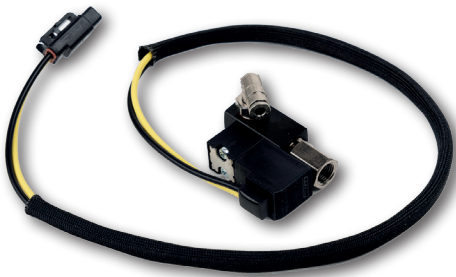
Part#: 928199 , Fitment: 17-23 Touring, 24 FLHRXS, 24 FLTRK, 24 FLHTK, (except 23 FLHXSE, 23 FLTRXSE) , Fitment Note: 17-19 FLHTKL only lowers 1" 17-19 FLHTKL only lowers 1" , Diameter: 49 mm, Unit: Pair , Qty.: 1



Low Boy Fork Lowering Kit

- Lowers front fork 1 1/4" or 2" depending on the spacer used
- Simple installation with only minor disassembly of forks necessary
- Easy to return to stock
- Progressively wound springs

Part#: 928198 , **Fitment:** 17-24 Touring, (except 23-24 FLHXSE, 23-24 FLTRXSE, 24 FLTRXSTSE) , **Field of Application:** Careful evaluation of fender-to-frame clearance is required when installing any lowering kit. , **Description:** -1.25"/-2" Lower, 49 mm , **Diameter:** 49 mm, **Unit:** Pair , **Qty.:** 1



Legend Air / Air-A / Air ST Suspension Replacement Solenoid Assembly

Solenoid Release Valve. Used with all Legend Air Suspensions kits.

Part#: 928142 , **Field of Application:** Fits all Legend Air Suspension Kits , **Description:** With Deutsch Connector , **Unit:** Each , **Qty.:** 0



Legend Air / Air-A / Air ST Suspension Replacement Compressor

Fitment Note: When equipped with Legend Air suspension , **Unit:** Each , **Qty.:** 1

PART#	FITMENT	DESCRIPTION
928143	04-20 Sportster, 06-17 Dyna, 89-24 Softail, 07-17 V-Rod	For Sportster, Dyna, Softail, V-Rod, with Deutsch Connector
928144		For Touring, with Deutsch Connector



Easyboy Lite Clutch

Revolutionize your riding experience with the game-changing Burly Brand Easyboy Lite Clutch. This clutch control powerhouse effortlessly slashes clutch lever effort up to an incredible 40%, ensuring you dominate the road with unparalleled ease.

- Extends the clutch operating mechanism, providing enhanced leverage for optimal performance
- Reduce clutch lever effort up to 40%
- Minimize rider fatigue
- Quick and easy installation

Part#: 929382 , **Fitment:** 04-20 Sportster , **Unit:** Each , **Qty.:** 1



World's Finest Products For Harley-Davidsons

Transmission Needle Bearing

- Quality replacement bearing

Part#: 930009 , **Fitment:** 84-85 Softail, 82-84 FLH, 82-84 FLHC, 82-84 FLHP, 82-84 FLHS, 83-84 FLHT, 83-84 FLHTC, 83-84 FLHPT, 82 FXB Sturgis, 82-84 FXE, 82-84 FXEF, 82 FXS, 82-84 FXWG, 83 FXDG, 83-84 FXSB, 84 FXRSDG , **Description:** Main Drive Gear, 4-Speed Big Twin , **OEM #:** 8906 , **Unit:** Each , **Qty.:** 1

NEW PRODUCTS



KOSO

HD-06 4-Meter Instrument Kit

The HD-06 plug & play multifunction speedometer & tachometer kit is equipped with adjustable brightness LED displays. These Instruments provide the basic function of speed, RPM, gear position, odometer and trip meter. They also include a clock and all necessary indicator lights and are easy to connect and install.

- Speedometer: Display: 0 - 299 km/h (0 - 199 mph) switchable
- Display response time < 0.5 seconds
- Speeding Warning: Setting range: 30 - 299 km/h (19 - 199 mph)
- Display reading: 0 - 999,999 km (miles)
- Internal and external total odometer: Tire circumference
- Setting range: 50 - 210%
- Trip meter A B: Display reading: 0 - 9,999.9 km (miles)
- Maintenance intervals: Setting range- OFF, 500 - 16,000 km (300 - 10,000 miles)
- Gear indicator: Display indication: OFF, N, P, R, 1, 2, 3, 4, 5, 6
- Speedometer: Display readout: 0 - 9,990 rpm
- Speed shift light: Display reading: 2,000 - 8,000 rpm
- Recording of the highest speed ever driven: Display reading: 0 - 8,000 rpm
- Engine temperature: Setting range: - 40 – 300°C (- 40 – 572°F)
- Fuel gauge: Setting range: HD standard / customer-specific
- Low fuel warning: Setting range: HD Standard – LCD flashes as a warning when fuel resistance is greater than 211 ohms and goes off when resistance is less than 187 ohms
- Customized - LCD flashes when level is less than 20% and goes off when higher than 30%
- Tank volume: Setting range: OFF / 1.0 – 9.9 US gallons
- Average consumption: Setting range: OFF // L/100km // km/L // MPG (US spec.) // MPG (UK spec.)
- Fuel reserve: Display reading: 0 - 9,999 km (6,249 miles)
- Watch: Setting range: 12/24 hour format
- Oil temperature: Display reading: 0 – 400 °F (32 - 248 °C)
- Air Pressure Gauge: Display reading: Display --- if no sensor is installed, 0 – 150 PSI
- Air pressure gauge calibration: Calibration range: 0 – 25 PSI +/- 1 PSI
- Background brightness adjustable
- Required voltage: DC 12V
- Working temperature range of the displays: -10 - + 60°C
- Specifications: JIS D 0203 (S2)
- Indicator lights: Turn signal right + left (green)
- Photometric detection
- Oil (Red)
- Check Engine Light (Yellow)
- Cruise Control (Orange/Green)
- Anti-Theft (Red)
- Water Temperature (Blue)
- Warning Light (Orange/Green)
- High Beam (Blue)
- Fog Light (Green)
- ABS (Yellow)

Fitment: 14-21 Touring, (except 14-18 FLHRC, 14 FLHRSE, 14-21 FLHTKSE, 15-21 FLHXSE, 16-21 FLHR, 16 FLTRUSE, 18-21 FLHRXS, 18-19, 21 FLTRXSE, 18 ANVFLHTKSE) , Fitment Note: Does not fit CVO models , Unit: Kit , Qty.: 1

PART#	DESCRIPTION
930021	Blue Backlight
930013	Red Backlight



*Optional air pressure sensor kit for air suspension (part# BZ012000)



HD-03 4-Meter Instrument Kit

This plug & play kit from Koso is now available to replace stock meters without any hassle! There is no need to drill holes or to rewire the meters, they will fit directly on the OEM dash and connectors. The kit features a 8 color changeable LCD display for a custom look to fit your motorcycle.

- Specifications:
- Tachometer: 0 ~ 9,990 RPM | U: 10 RPM
- RPM shift light: 2,000 ~ 8,000 RPM
- Warning lights
- Maximum speed recording
- Odometer
- Trip odometer A/B
- Mileage maintenance
- Engine temperature
- Fuel gauge
- Fuel warning setting
- Average fuel consumption
- Remaining mileage
- Oil temperature gauge
- Max. oil temperature recording
- Clock
- Voltmeter
- Brightness of the digits
- Flashing lights
- Turn Signal / Water Temperature / Oil Pressure / Photometric Measurement / Warning Light / Check Engine / High Beam / Fog Light / Volt / Traction Control / Cruise Control / ABS / Rain Mode / Vehicle Holding Control / Fuel Level / Low Tire Pressure / Security Light
- Gear indicator
- Effective temperature range
- DC 12V
- Backlight color setting: white, yellow, orange, red, purple, blue, light blue, green

Part#: 929394 , Fitment: 14-20 Touring, (except 14-18 FLHRC, 14 FLHRSE, 16-20 FLHR, 18-20 FLHRXS), 14-20 FLHTCUTG, 18 FLHTCUTG ANV, 20 FLHTCUTGSE , Description: 8 Color Changeable Display , Unit: Each , Qty.: 0



D2-Meter Plug & Play Optional Extension Harness

- Extension Length : 10" (254 mm)

Part#: 930023 , Field of Application: For Koso D2 Meter CCE# 929393, 930019, 930020 , Unit: Each , Qty.: 1



D2 Meter and HD-03 4 Pieces Meter Kit Optional Air Pressure Kit

- Extension Length: 70" (1.800 mm)

Part#: 930022 , Field of Application: For Koso D2 Meter CCE# 929393 and HD-03 4 Pieces Meter Kit CCE# 929394 , Unit: Kit , Qty.: 1



D2 Multifunction Speedo- and Tachometer for Baggers

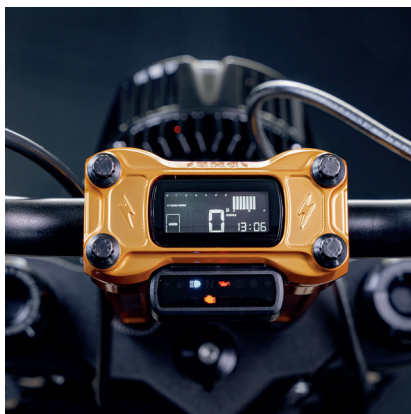
Customize your motorcycle with the high quality Koso D2 - 100% plug & play meter that is equipped with an 8-color changeable LCD display. This gauge features a tach and speedo combo with a programmable shift light and includes a gear indicator for easily seeing what gear you're in.

This gauge also features vital readings such as engine temperature, battery voltage, tire pressure and a complete system of indicator lights to monitor your bikes vital signs. This gauge will fit into the stock harness.

Note: To access settings on CVO models, you must turn on the start/stop switch to prevent the motorcycle from turning off. Then you can make the settings on the measuring device.

- Specifications
- Speedometer 0~199 km (0~124 mile) switchable
- Display interval <0,5 second
- Internal and external odometer 000,000 ~ 999,999 km (mile) returns to zero upon exceeding
- Trip meter A,B 0,000,0 ~ 9,999,9 km (mile) returns to zero upon exceeding
- Tire circumference 50 ~ 210 %
- Tachometer 0 ~ 10,000 RPM
- Backlight color white, red, orange, yellow, blue, light blue, purple, green
- Mileage maintenance Off, 500 ~ 16,000 km (300 ~ 10,000 mile)
- Indication light: Turn signal / Water temp / Oil pressure / Photometric sensing / Warning light/ Check engine / High Beam / Fog light / Volt / Traction control / Cruise / ABS / Rain mode / Vehicle hold control / Fuel level / Low tire pressure / Security light
- Shift light warning 2,000 ~ 10,000 RPM
- Engine temperature -38 ~ 572 °F (-39 ~ 300 °C)
- Clock 12 / 24 hour format
- Voltmeter 8 ~ 18 V
- Backlight brightness 1/5 (darkest) ~ 5/5 (brightest)
- Tire pressure (TPMS, FR/RR/LR shall be displayed when the vehicle supports TPMS)
- Fuel Meter 10 levels
- Operating voltage DC 12 V
- Operating temperature -20 ~ 85 °C
- Storage temperature -30 ~ 90 °C
- Specifications JIS D 0203 (S2)
- Meter size 88,2 x 67,0 x 35,2 mm

Part#: 929393 , Fitment: 14-16, 19 FLHTCU, 14-23 FLHTK, 14, 18-23 FLHX, 15-19 FLHTKL, 15-18, 20-21, 23 FLHXS, 15-23 FLTRXS, 15-16 FLHTCUL, 16-19 FLTRU, 18-23 FLTRX, 18 FLHX ANV, 18 FLHXS ANX, 19 FLXHS, 20-21 FLHT, 20-23 FLTRK, 21-22 FLH, 22-23 FLHXST, 22 FLHX , 22-23 FLTRXST, 23 FLHTKANV, 23 FLHXANV , Fitment Note: Does not fit CVO models , Description: 8 Color Changeable Display , Unit: Each , Qty.: 0



KOSO

D2 Multifunction Speedo- and Tachometer

Customize your motorcycle with the high quality Koso D2 - 100% plug & play meter that is equipped with an 8-color changeable LCD display. This gauge features a tach and speedo combo with a programmable shift light and includes a gear indicator for easily seeing what gear you're in.

This gauge also features vital readings such as engine temperature, battery voltage, tire pressure and a complete system of indicator lights to monitor your bikes vital signs. This gauge will fit into the stock harness.

- Specifications
- Speedometer 0~199 km (0~124 mile) switchable
- Display interval <0,5 second
- Internal and external odometer 000,000 ~ 999,999 km (mile) returns to zero upon exceeding
- Trip meter A,B 0,000,0 ~ 9,999,9 km (mile) returns to zero upon exceeding
- Tire circumference 50 ~ 210 %
- Tachometer 0 ~ 10,000 RPM
- Backlight color white, red, orange, yellow, blue, light blue, purple, green
- Mileage maintenance Off, 500 ~ 16,000 km (300 ~ 10,000 mile)
- Indication light: Right indication light (Green) Security light (Red) ABS light (Amber) Motor oil light (Red) Neutral light (Green) High beam light (Blue) Low fuel warning light (Amber) Left indication light (Green) Fog light (Green) Battery discharge light (Red) Engine light (Amber) Cruise light (Green/Amber) Tire pressure warning light (Amber)
- Shift light warning 2,000 ~ 10,000 RPM
- Engine temperature -38 ~ 572 °F (-39 ~ 300 °C)
- Clock 12 / 24 hour format
- Voltmeter 8 ~ 18 V
- Backlight brightness 1/5 (darkest) ~ 5/5 (brightest)
- Tire pressure (TPMS, FR/RR/LR shall be displayed when the vehicle supports TPMS)
- Fuel Meter 10 levels
- Operating voltage DC 12 V
- Operating temperature -20 ~ 85 °C
- Storage temperature -30 ~ 90 °C
- Specifications JIS D 0203 (S2)
- Meter size 88,2 x 67,0 x 35,2 mm

Description: 8 Color Changeable Display , Unit: Each , Qty.: 1

PART#	FITMENT	FITMENT NOTE
930019	04-06 FXDI, 04-06 FXDLI, 04-06 FXDWGI, 04-05 FXDXI, 05-06 FXDCI, 06 FXD35, 06 FXDBI, 07, 10 FXD, 07-11 FXDB, 07-11 FXDC, 07-09 FXDL, 07-08, 10-11 FXDWG, 08-09, 11 FXDF, 04-06 FLSTCI, 04-09 FLSTF, 04-06 FLSTFI, 04-06 FXSTBI, 04-06 FXSTDI, 04-06 FXSTI, 04-06 FXSTSI, 05, 07-10 FLSTN, 05-06 FLSTNI, 05-06 FLSTSCI, 05, 07 FXSTD, 05, 07-09 FXSTB, 06 FLSTI, 07-10 FLSTC, 07 FLSTSC, 07 FXST, 07-10 FXSTC, 08 FXCW, 08-10 FXCWC, 08-10 FLSTSB, 04-13 XL1200C, 04, 07 XL53C, 04-08 XL883, 05-06 XL(H)53C, 05-13 XL883L, 05-07 XL883R, 06-10 XL1200L, 08-12 XL1200N, 08-09 XL883C, 09-13 XL883N, 10-13 XL1200X, 12-13 XL1200V, 13 XL1200C ANV	
930020	11-12 FXS, 11-12, 14, 16-17 FLSTN, 11-12, 14-16 FLSTFB, 11-12, 14-17 FLSTF, 11-12, 14-17 FLSTC, 11 FXCWC, 11 FLSTSB, 12, 14-17 FLS, 13 FLS 103, 13 FLSTC 103, 13 FLSTC 103 ANV, 13 FLSTF 103, 13 FLSTFB 103, 13 FLSTN103, 13 FXS 103, 15-17 FXSB, 16-17 FLSS, 16-17 FLSTFBS, 12-13, 15-16 FXDB, 12, 14-16 FLD, 12-14 FXDC, 12, 14-17 FXDF, 12, 15-16 FXDWG, 13 FLD103, 13 FXDC ANV, 13 FXDF103, 13 FXDWG103, 15-16 FXDL, 16 FXDLS, 14-18 FLHRC, 16-22 FLHR, 18-23 FLHRXS, 15-16, 19 XL1200C, 15-17, 19-20 XL1200X, 15-16, 19 XL883L, 15-17, 19-20 XL883N, 15-16 XL1200T, 15-16 XL1200V, 16, 19-20 XL1200CX, 19-20 XL1200NS, 19 XL1200XS	
922661	18-20 FXBB, 18-19, 23-24 FXBR, 18-20 FXBRS 114, 18 FXBRS 114 ANX, 21-22, 24 FXBBS, 21-22 FXBRS, 22-24 FXST, 22-24 FXLRST	Except models equipped with traction control

NEW PRODUCTS



Fuelpak FP4 ECM Tuning Module

Vance & Hines FP4 is the most intuitive tool on the market, giving you the power to control your motorcycle's tune, view live sensor data, read and clear trouble codes, and offers best in industry support from our FP4 technicians, all from your smartphone. The Vance & Hines FP4 brings our legendary fuel tuning and performance to your Harley-Davidson models, with all new features, and the ease of use you expect from Vance & Hines.

- Fast and easy to use
- View live sensor data
- Read and clear trouble codes
- Advanced Tuning
- Built-in Decel Pop tool
- Improved Auto Tune Feature
- Throttle Progressivity feature (not available for bikes with RDRS system)
- Advanced Tuning
- Adjustable idle RPM, rev limit, VE tables
- Target Air Fuel Ratio and Spark Advance
- Compatible iOS or Android

Unit: Each , Qty.: 1

PART#	FITMENT	DESCRIPTION
922622	21-23 Softail, 21-23 Touring	Red 6-pin CAN bus
923258	14-20 Sportster, 12-17 Dyna, 11-20 Softail, 14-20 Touring, 14-20 Trike, 15-20 Street	Gray 6-pin CAN bus
924237	07-13 Touring, (except 07 FLHRSE3, 07 FLHTCUSE2, 08 FLHRSE4, 08 FLHTCUSE3), 07-10 Softail, (except 07 FXSTSSE, 08 FXSTSSE2, 09 FXSTSSE3, 10 FLSTSE, 11 FLSTSE2, 12 FLSTSE3, 13 FXSBSE), 07-11 Dyna, (except 07 FXDSE, 08 FXDSE2, 09 FXDFSE, 10 FXDFSE2), 07-13 Sportster	Red 4-pin J1850 bus
930015	21-23 Pan America	Red 6-pin CAN bus



On Bike Valve Spring Compressors

When changing valve springs for performance upgrades, or simply replacing a leaking valve seal, it is necessary for the technician to completely remove the cylinder head from the engine. This adds unnecessary time and expense. You can now use this revolutionary and creative tool that JIMS has developed, which eliminates this step completely. This patent pending "on bike" valve spring compressor kit for Milwaukee Eight engines, works with the cylinder head installed on the motor. Simply remove the rocker box covers and rocker arms, and install this unique compressor on the rocker arm shaft. Once the cylinder is filled with compressed air, the technician can easily rotate the tool and compress the top collar of the valve spring exposing the keepers to remove the top collar, valve spring, and seal. This patent pending tool dramatically saves time for any technician working on Milwaukee Eight performance upgrades or service work.

Part#: 928156 , Fitment: 18-24 Softail, 17-24 Touring, 17-24 Trike , Unit: Kit , Qty.: 1



Cylinder Torque Plates

Late model aluminum cylinders cannot be accurately honed without using torque plates. These plates simulate operating stress conditions when boring or honing aluminum cylinders. These plates easily adapt to conventional boring bars or a Sunnen type honing machine. The JIMS® torque plates are drilled precisely for multiple applications use, and can accommodate various bore sizes, with stock or oversize big bores. These kits are lasered lettered for ease of use with torquing sequence and most sets don't require removal of ring dowels.

Qty.: 1

PART#	FITMENT	FIELD OF APPLICATION	FITMENT NOTE
20291	99-17 Dyna, 00-17 Softail, 99-16 Touring, 09-16 Trike	JIMS Twin Cam Big Bore Cyl's, H-D, Bigger Bore Cyl's with OEM bolt pattern 99 to present,	For 4.00" up to 4.060" Bore
20806	66-84 FL Shovel, 71-84 FX Shovel, 85-94 FX Model, 91-98 Dyna, 84-99 Softail, 86-98 Touring, 86-20 Sportster		For 3.4375" - 4" Bore, For Sportster or Buell must order Torque Plate Bolts seperately CCE# 20807
928159	18-24 Softail, 17-24 Touring, 17-24 Trike		



Piston Ring End Gap Tool

This tool makes measuring ring end gap faster, more accurate and eliminate the guess work. The flanged design allows the piston ring to fit squarely in cylinder bore every time. This is the first tool to desinged to be able to test oil ring gaps by a proprietary cutout feature. Just install any ring, top, 2nd, or oil control rails on the tool. Install tool into a cylinder bore and then view the ring end gap in the "Key Slot". Use a feeler gauge to get your end gap measurement. Each side of the tool is made for checking a standard size piston rings.

Unit: Each , Qty.: 1

PART#	FIELD OF APPLICATION
890574	For H-D Twin Cam standard size pistons for 95" 103" or 110", with 3.875" or 4.000" bore
928158	For Jims Twin Cam standard size piston of 120", 131", and 131" engines, with 4.125" or 4.130" bore



Cruise Drive Vise Stand

To assist in the assembly of the transmission gears and shafts, JIMS has developed the Cruise Drive Vise Stand. No more fumbling with parts on the bench or clamping in a vise with soft jaws. This new tool holds the shafts in perfect alignment while protecting them from damage. Faster, easier, and safer assembly is now possible.

Part#: 928153 , Fitment: 06-17 Dyna, 07-24 Softail, 07-24 Touring, 09-24 Trike , Unit: Each , Qty.: 1



Tappet Position Holding Tool

Expert technicians know that keeping the same parts operating in their original position and direction is a good idea. This is especially true with the tappets in Harley-Davidson engines. Whenever the tappets are removed, in the case of a camshaft change or complete tear down, our new Tappet Position Holding Tool allows the tappets and anti rotation pins to be safely and accurately stored for proper reinstallation. Tappet locations are clearly referenced on the tool, which also serves to protect the tappets from damage when removed from the engine.

Part#: 928157 , Fitment: 00-20 Sportster, 99-17 Dyna, 00-24 Softail, 99-24 Touring, 09-24 Trike, 00-02 M2, 00-02 X1, 03-10 XB , Unit: Each , Qty.: 1



Shifter Mechanism Sleeve Remover and Installer

With this tool on Cruise Drive Big Twin transmissions, the sleeve (bushing) can be removed and installed correctly without disassembling the transmission, saving hours of labor! This tool will pay for itself in one use!

Part#: 928154 , Fitment: 06-17 Dyna, 07-24 Softail, 07-24 Touring, 09-24 Trike , Unit: Set , Qty.: 1



5- and 6-Speed Countershaft Bearing Remover and Installer Tool

This exclusive tool will install or remove the closed end countershaft bearing on all 5-Speed or 6-Speed Cruise Drive transmissions without using a press or tapping it in with a transmission shaft. This is a precision hand tool designed to install the bearing square and to the proper depth, the JIMS way.

Part#: 928155 , Fitment: 85-94 FX Model, 91-17 Dyna, 86-24 Softail, 85-24 Touring, 09-24 Trike, 80-84 FLT, 81-84 FLTC, 82-84 FXR, 82-84 FXRS, 83-84 FXRT, 84 FXRSDG , Unit: Set , Qty.: 1



RoadTech PA1 Tool Kit for Pan America

Designed for roadside repairs and adjustments on the Harley-Davidson Pan America. The unique fasteners used on the Pan America require a very specific tool set, so CruzTOOLS has created a travel tool kit that includes just the right tools needed on the road while keeping the weight and size to a minimum by eliminating unnecessary items. Beware of one-size-fits-all tool kits which have extra weight and bulk from tools you don't need. Those kits also typically don't have the specialty tools required for specific bike types.

The RoadTech PA1 includes top-grade combination wrenches, an 8" adjustable wrench, locking pliers, tire gauge, hex & torx keys, 6-in-1 screwdriver, a 70-tooth mini ratchet, extensions, and socket set. A highlight of the kit is the innovative 36mm Axle Wrench with light-weight aluminum extension that provides 12 inches of leverage for removing the high-torque axle nut on the Pan America. The included 32mm axle wrench is needed to hold the other side of the axle when removing the axle nut. Front wheel removal is made possible with the included 10x12x19x22mm combo axle adapter.

The tools stay organized with a heavy-duty pouch that rolls up for compact storage on the bike. Be ready for any adventure on your Harley-Davidson Pan America with this RoadTech PA1 accessory tool kit.

Part#: 926656 , Unit: Kit , Qty.: 1



DOT 4 High Performance Brake Fluid

- RevTech High Performance DOT 4 Brake Fluid: Engineered performance in both drum and disc brake systems, with or without ABS/ASR! Works for hydraulic clutches as well.
- Ultimate Rust Protection: Keeps your brake system safe and rust-free, ensuring long-lasting reliability.
- Optimal Heat Management: Best heat absorption and transfer for peak performance under pressure.
- Seal and Metal Safe: Won't harm seals, metals, or alloys – protects and prolongs your system's life.
- Smooth Lubrication: Reduces wear to a minimum, thanks to superior lubricity.
- Stable and Clean: No deposits, low viscosity at cold temps – performs like great in any climate.
- High Wet Boiling Point: Prevents vapor lock during intense braking, boosting safety and reliability.
- Regular Maintenance Required: Check and change your brake fluid regularly due to its hygroscopic nature – stay safe!
- Key Specs: Yellow color, density at 20°C: 1.069 kg/l, kinematic viscosity at 40°C (100°C): 7.8 cSt (2.2 cSt), flash point: 120°C, pour point: 36°C, dry (wet) boiling point: >260°C (>155°C).
- Important Note: Brake fluid can damage paint – rinse immediately if spilled. Store properly to avoid contamination.
- Compatibility Warning: Never use in systems with silicone-based fluids (like DOT 5). Do not mix with DOT 5.

Fitment: 07-20 Sportster, 06-17 Dyna, 06-24 Softail, 05-24 Touring, 09-24 Trike, 06-17 V-Rod, 15-20 Street, 20-21 LiveWire, 21-24 Pan America, 21-24 Sportster RH, Color: Yellow, OEM #: 41800770

PART#	DESCRIPTION	UNIT	QTY.
930007	12 x 250 ml	Case	12
930008	1 x 250 ml	Each	1



DOT 5 High Performance Brake Fluid

- RevTech High Performance DOT 5 Brake Fluid: Unleash superior braking with our RevTech silicone-based Brake Fluid!
- Optimum Temperature Range: Performs flawlessly from -55°C to +260°C – ready for any challenge!
- Corrosion Prevention: Guards your system with unbeatable protection, keeping rubber seals and metals in peak condition.
- Extended Lifespan: Designed to maximize your brake system's longevity – because your ride deserves the best!
- Paint-Friendly Formula: No worries about damaging your bike's finish.
- Perfect for Harley-Davidson: Tailor-made for your hydraulic brake and clutch systems – your Harley's new best friend!
- Key Specs: Color: Purple; Density at 20°C: 0.95 kg/l; Viscosity, kinematic at 100°C: 13.9 cSt; Flashpoint: COC 200 °C.
- Important Note: Always drain old brake fluid completely before using. Never mix with brake fluids of a different type!

Fitment: 48-65 Panhead, 66-84 FL Shovel, 71-84 FX Shovel, 85-94 FX Model, 52-06 Sportster, 91-05 Dyna, 84-05 Softail, 86-04 Touring, 02-05 V-Rod, Color: Purple, OEM #: 41800220

PART#	DESCRIPTION	UNIT	QTY.
930005	12 x 250 ml	Case	12
930006	1 x 250 ml	Each	1